

Fioriture interpretation in Chopin's Nocturnes by Frank Merrick



Old editions have their uses. The old Novello edition of Chopin Nocturnes has a very helpful table of the *fioriture* (fast florid passages) in the Chopin Nocturnes, with an interpretation by Frank Merrick of how to play them. The general consensus seems to be that the best way to tackle these is to split them into smaller groupings, or duplets, triplets, quartuplets, quintuplets, etc. and Merrick shows one way of doing that. He says:

“...regarding the rhythmical grouping of florid passages etc., ... the following may prove helpful to those who are in need of some advice in this matter. It should be remembered, however, that there are often many possible groupings to choose from and that the success of such passages depends primarily on the taste and conviction with which the selected grouping is played.”

To make the table more user-friendly, I have added Opus numbers and bar numbers, which I have taken from the Wiener Urtext Edition (Schott/Universal Edition)

FERGUS BLACK

Op 9 No 1 bar 2 (and later)



Op 9 No 1 bar 3



Op 9 No 1 bar 13



Op 9 No 1 bar 73



Op 9 No 2 bar 24



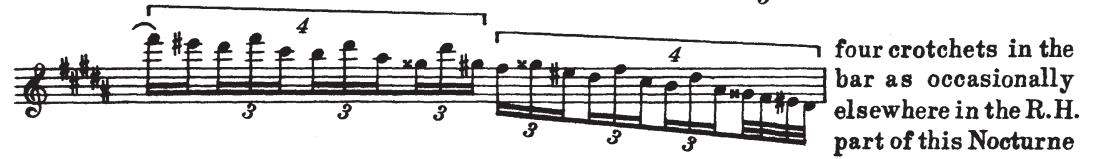
Op 9 No 3 bar 27



Op 9 No 3 bar 55



Op 9 No 3 bar 79



Op 9 No 3 bar 150



Op 15 No 1 bar 20 (and later)



Op 15 No 2 bars 10-11



Op 15 No 2 bar 18



Op 15 No 2 bar 20



Op 15 No 2 bar 51



Op 15 No 2 bar 54



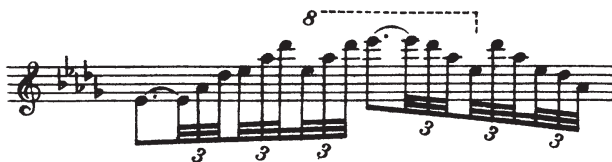
Op 27 No 2 bar 8



Op 27 No 2 bar 51



Op 27 No 2 bar 60



Op 27 No 2 bar 75



Op 32 No 1 bar 60



Op 32 No 1 bar 63



Op 32 No 2 bar 14 (and later)



Op 32 No 2 bar 22 (and later)



Op 37 No 1 bar 36 (and later)



Op 48 No 2 bar 98



Op 48 No 2 bar 136



Op 55 No 1 bar 14



Op 55 No 1 bar 30



Op 55 No 1 bar 44



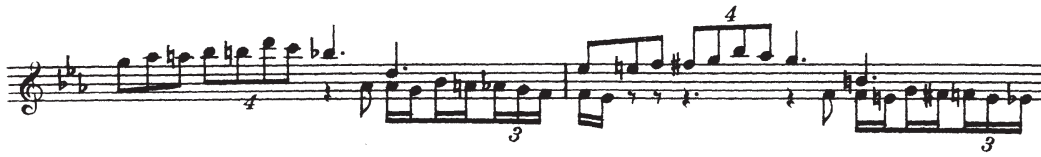
Op 55 No 1 bar 46



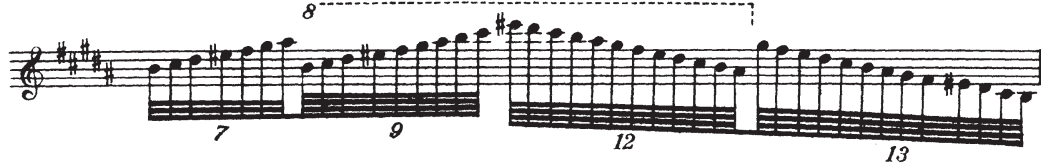
Op 55 No 2 bar 25



Op 55 No 2 bar 35-36



Op 62 No 1 bar 26



Op 62 No 1 bar 71



Op 62 No 1 bar 75



Op 62 No 2 bar 25



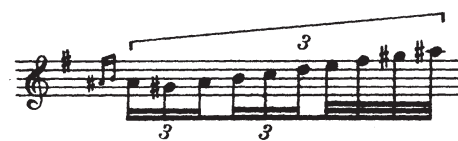
Op 62 No 2 bar 31



Op 62 No 2 bar 65



Op posth emenor bar 35



Lento con gran espressione bar 57



Lento con gran espressione bar 58



Lento con gran espressione bar 59



Lento con gran espressione bar 60

